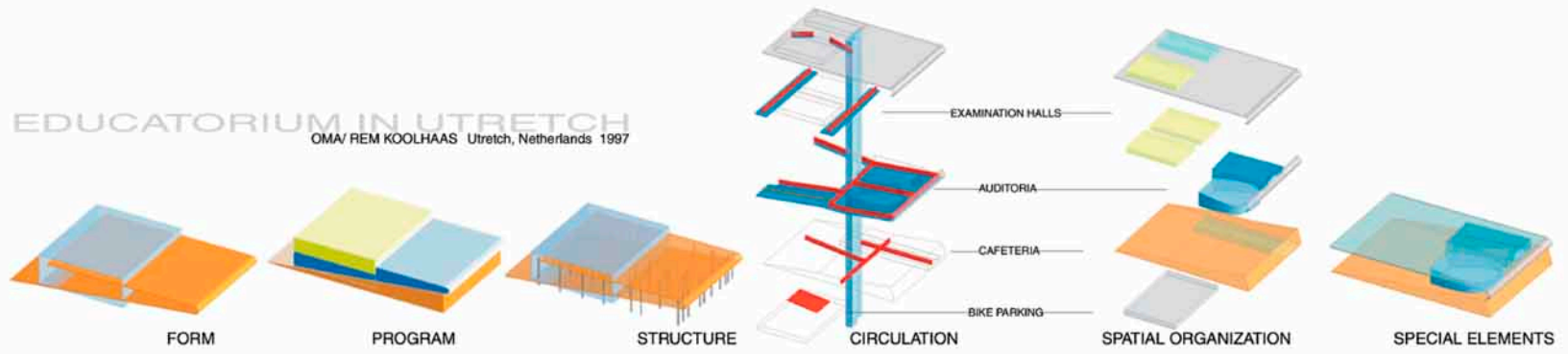


EDUCATORIUM IN UTRECHT

OMA/ REM KOOLHAAS Utrecht, Netherlands 1997



Rem Koolhaas

Educatorium

Netherlands

Type:
University of
Utrecht

Date:
1997

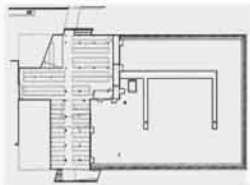
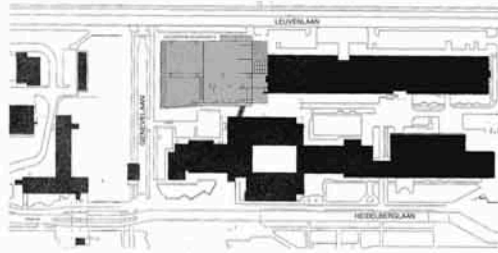
Square footage:
45000M sq
cafeteria - 1000st
auditoria - 900 st
examination halls
- 650 st

Structure:
Steel and concrete

Parking:
1100 bicycle space

concept:
A factory of learning

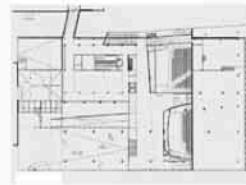
Bibliography:
GA Document no53
1997 Dec. p8-35
El Croquis no79
1998 p302-345



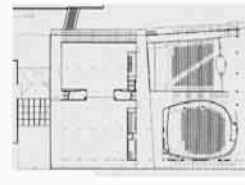
basement level -1.8m bicycle parking



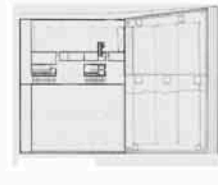
ground level +0.0m entrance hall and cafeteria



first level +4.0m

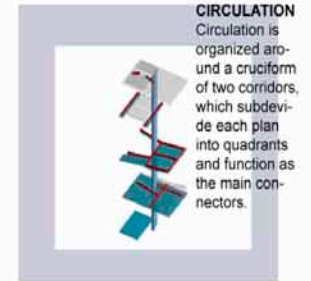


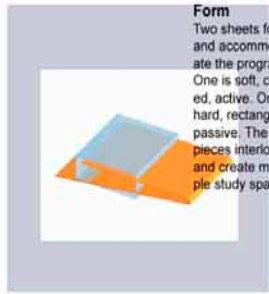
second level +8.0m two auditoriums



third level +12.0m examination hall

0 3 9 20m

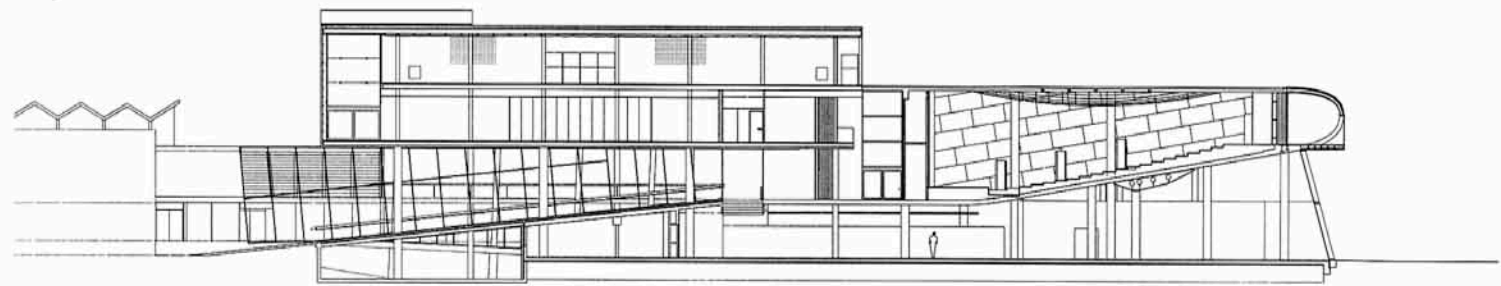




Form
Two sheets fold and accommodate the programs. One is soft, curved, active. One is hard, rectangular, passive. The two pieces interlock and create multiple study spaces.

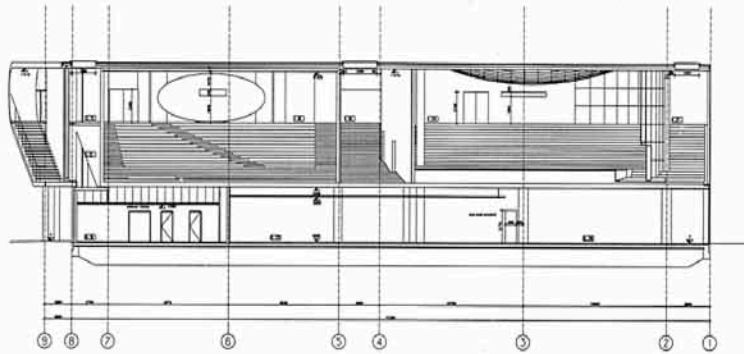
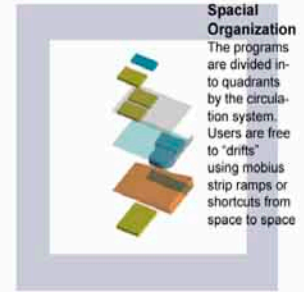
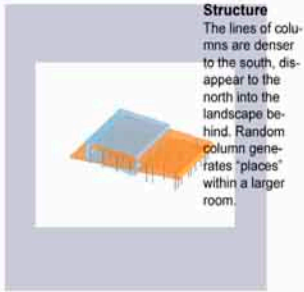


Program
Cafeteria - as a study area and venue for large ceremonies.
Auditorium - allow a variety of conditions based on the individual professor's desire.
Examination halls - rooms with flexible free plan.

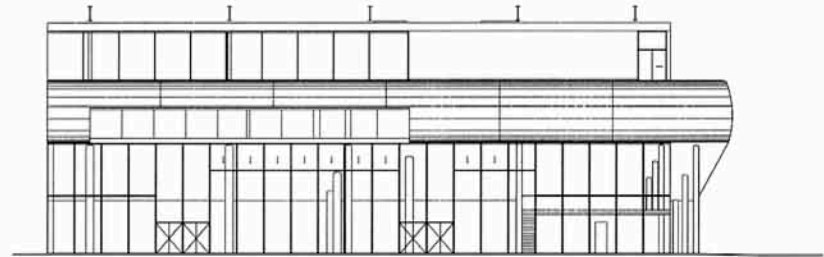


Logitudinal section DD through South Auditorium

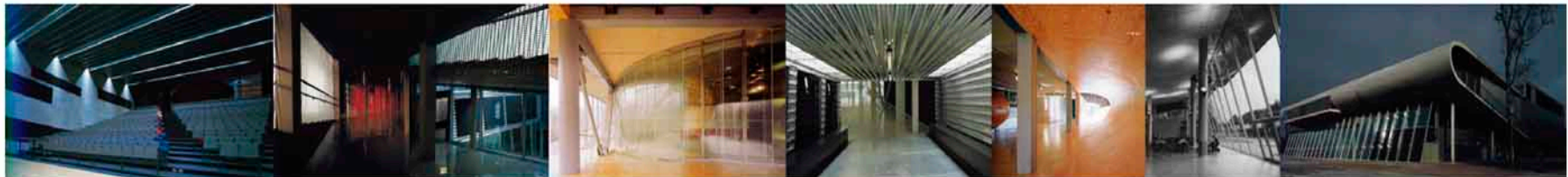


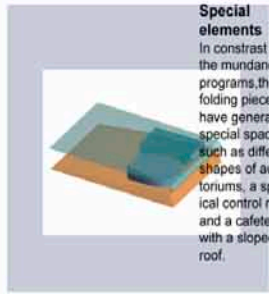


Cross section through Auditorium



West elevation





Special elements
 In contrast with the mundane programs, the folding piece have generated special spaces such as different shapes of auditoriums, a spherical control room, and a cafeteria with a sloped roof.

