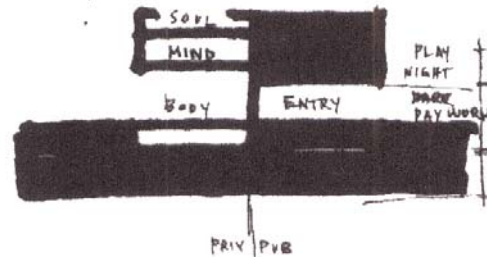
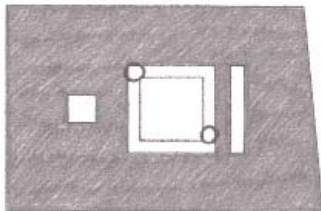
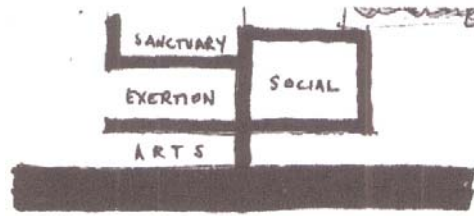
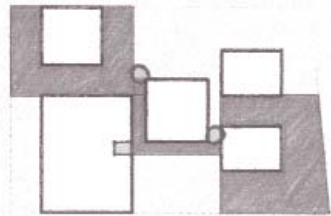
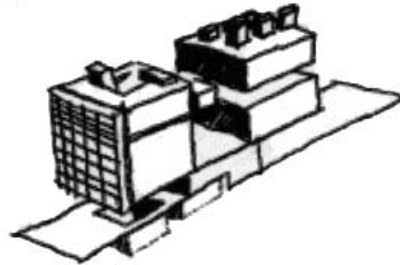
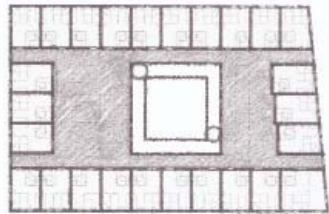
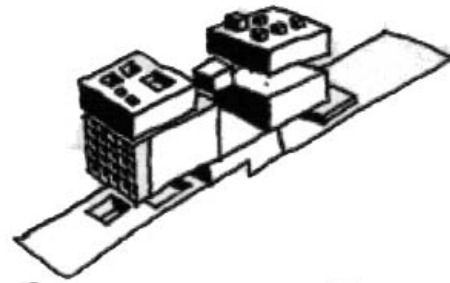
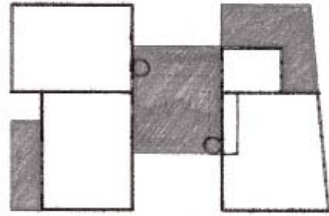


# 5th Year Comprehensive Studio Spring 2001 Community/Retreat Center

Rainier R. Lopez



At the Give and Receive project, a community retreat, users give time and skills to the community and receive rejuvenation through various activities. The user becomes both volunteer and retreator. Run by a non-profit organization involved in the promotion of the arts and beautification, the Center becomes a tool for collaboration among the organizations and the community, allowing the creation of events for the betterment of the city and the planet.

## Ground Level Plaza (community center)

- plaza
- glass column
- wooden ramp
- shed
- creek
- proposed bikepath
- existing bikepath
- open to below

- outdoor pool
- whirlpool
- "boiling" pool
- "icy" pool
- steam cell
- massage chamber
- stretching chamber
- mechanical gallery
- lounge area
- shower holes

## Underground bath (retreat)

- entry
- showcase lobby
- administration
- reception
- general workspace
- organization liaison's office
- visiting guide's office
- director's office

## 2nd level courtyard (retreat)

- orientation courtyard
- meditation hall (soul)
- exertion hall (body)
- units and patios
- library

- "heart" meeting room
- general assembly hall
- bookstore
- café
- kitchen
- entry
- changing rooms with showers
- indoor pool

- 3rd level sanctuary (retreat)
- creation hall (body)
- sanctuary
- lounge

- Roof level (retreat)
- rainwater meditating pool
- connecting skylights

