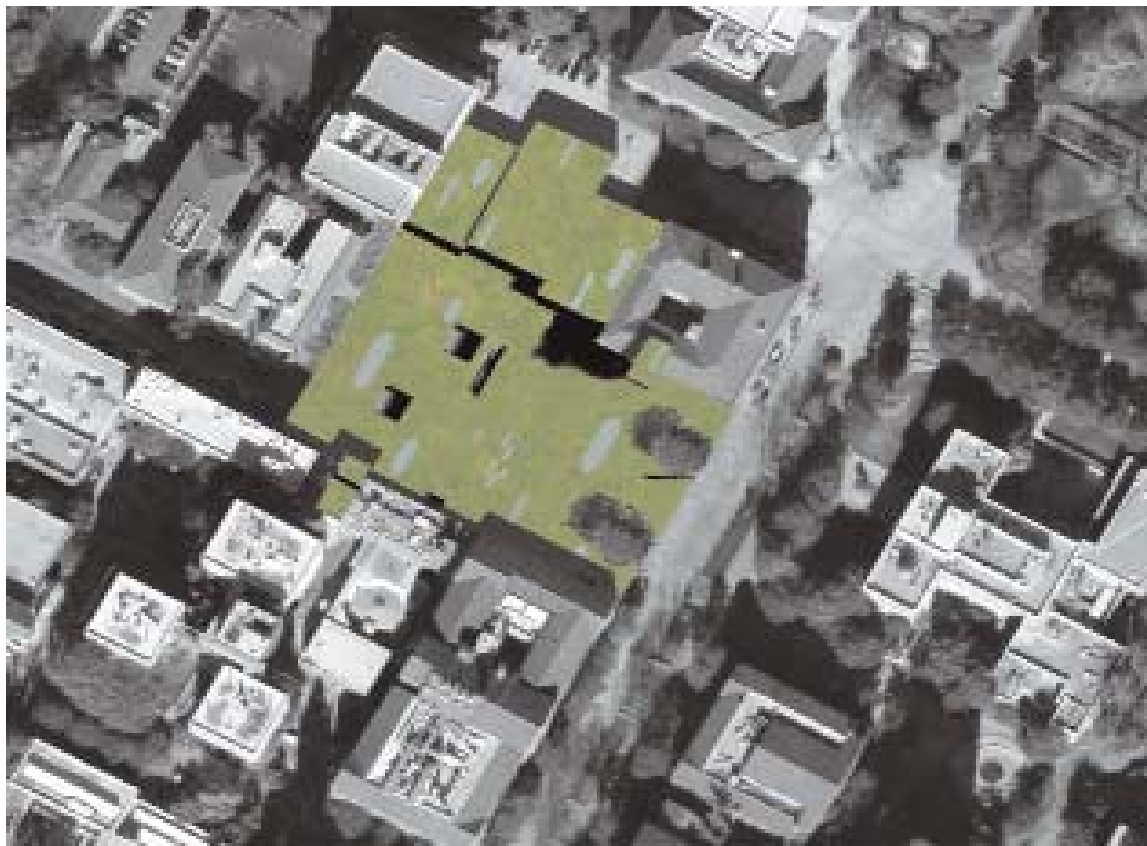


## USC Student Center

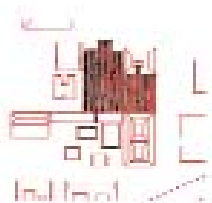


Uniquely rich in vegetation, the USC campus serves as an urban park not only for the students, but the entire surrounding neighborhood. Embracing this aspect, I developed a system of construction which had the possibility to expand this notion. This system is made out of a series of strips which undulate up and down, becoming floor, then wall, then ceiling. It is a flexible system, one of fluid motion which relates more to the human body and to human movement than the existing static masonry and concrete buildings.

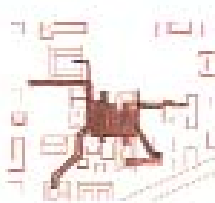
Despite its aesthetic continuity USC is a surprisingly fragmented environment. Horizontally and vertically, buildings and spaces lack little relation to one-another. Although the majority of the dining facilities and several student amenities are currently located on this project's site, it still does not serve as the campus center. Decentralized restaurants and pockets of open spaces further fragment the campus. This fragmentation makes it difficult to find ample space for major student gatherings such as concerts and pep rallies. By removing two existing structures and lowering the dining and game rooms below an expansive plaza, this project is able to create generous indoor and outdoor gathering spaces.

### Dispersal of Greenscape

USC exists in a poor neighborhood which lacks adequate open and park space. The diagram on the left shows the existing accessible landscaped areas in the neighborhood. Nearly all of these spaces exist on University owned land. The campus therefore acts as an oasis in a harsh urban environment. The purpose of the new student center is to further this notion: to exaggerate the "park-like" characteristics of the campus.



Student Center



Campus



City