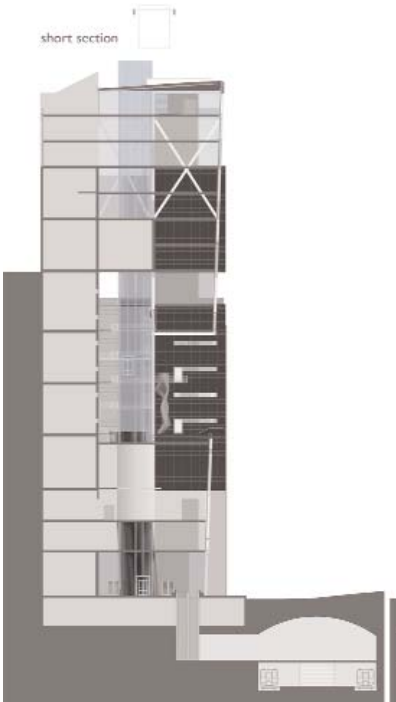
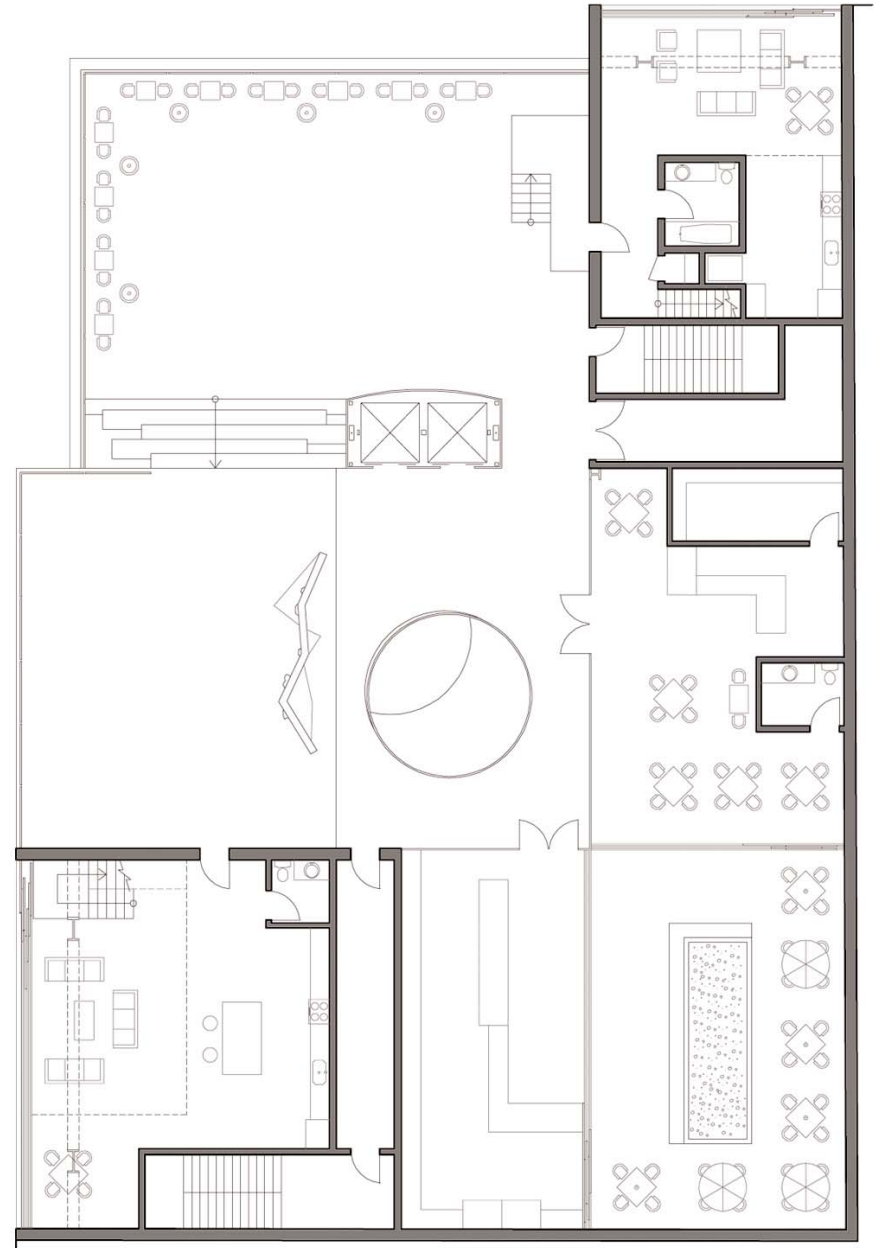
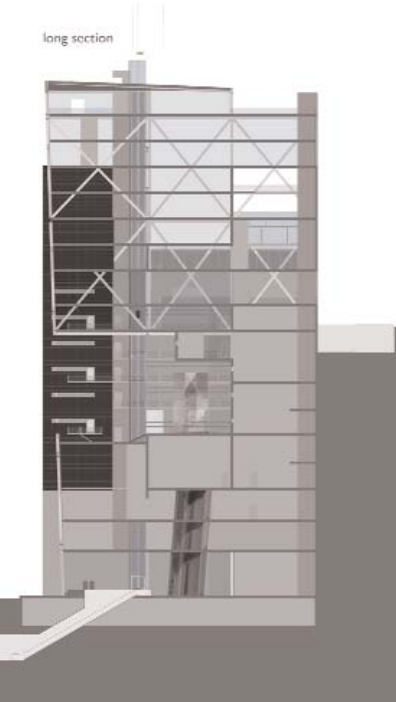


short section



long section



Microcosm



Microcosm is situated on a small infill site in Downtown Los Angeles, California on the corner of 4th and Hill Street. The project is about creating a vertical community that is filled with residential units, office spaces, retail spaces, food services, and entertainment activity. Typical notions of residential and public spaces are questioned and proven to be more dynamic and functional if there is a more intimate relationship amongst the two. Another important part of the design is the placement of large outdoor spaces placed vertically throughout the project. These outdoor spaces provide users an area of refuge and leisure activity. The main public void in the project is a vital component of the design. The main void has been strategically placed to allow natural sunlight and ventilation to enter the project giving the residential units and public program elements a more comfortable natural environment to live, work, and play in.

The structural system also became an important investigation for the project. Due to the large voids and cantilevers, a steel truss system is chosen to be used because of its strength, slenderness, and stimulating aesthetic. The final design calls for 2 large horizontal trusses that transfer loads back into a vertical truss. The structural system allows for large uninterrupted floor plans and also allows the voids to be created more dramatically by providing longer spans.

