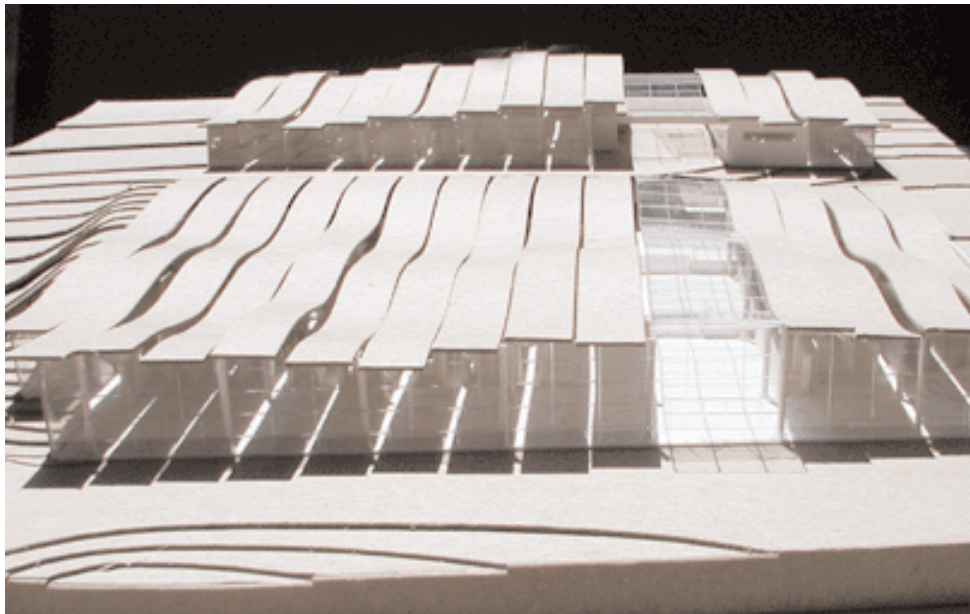
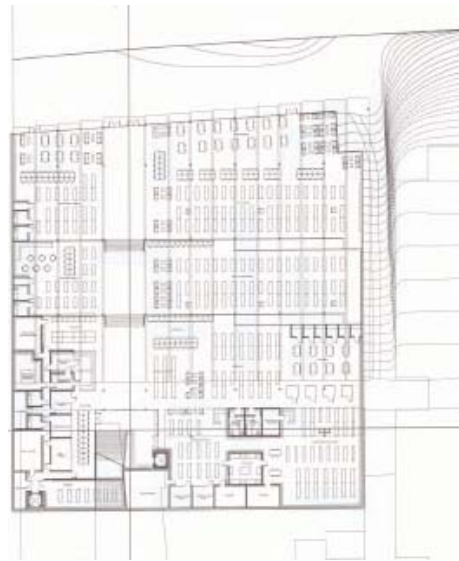
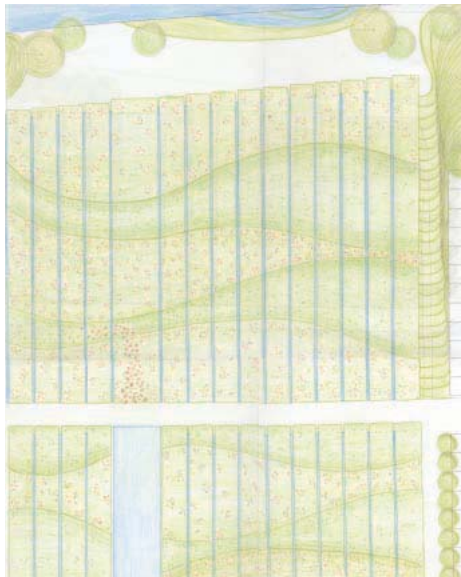


# Culver City Community Library

Kelly Dowling



Culver City was chosen for the site of this community library because it has such a strong community base. This city is in the midst of a large redevelopment plan that will continue to strengthen its identity as a prosperous and safe family oriented community. Culver City is centrally located within the Los Angeles Area, only 15 to 20 minutes from any of its major centers. The community is also deeply rooted in the film industry. It is home to Sony Pictures and the historic Culver City Studios.



The program of the library is split between its two levels. The street level of the library is a single-story bar building that houses the library's community components. This level houses the café, the library store, the park activity office, the performance/media hall, the community meeting room, classrooms, and offices. The bar is split into two parts by the library's circulation spine, it is here that the main entrances of the buildings are located, as well as, the stair and entrance to the lower level. The lower level houses the library's collection. It is on the lower level that the building steps down and reaches out to the creek. At the back of the lower level are the media library and staff offices. Near the door are the periodicals and circulation areas. As the library steps down, the collections are divided between the adult, children and teens libraries. The main reading room faces directly out onto the riparian creek landscape through the large, north facing glass façade.

