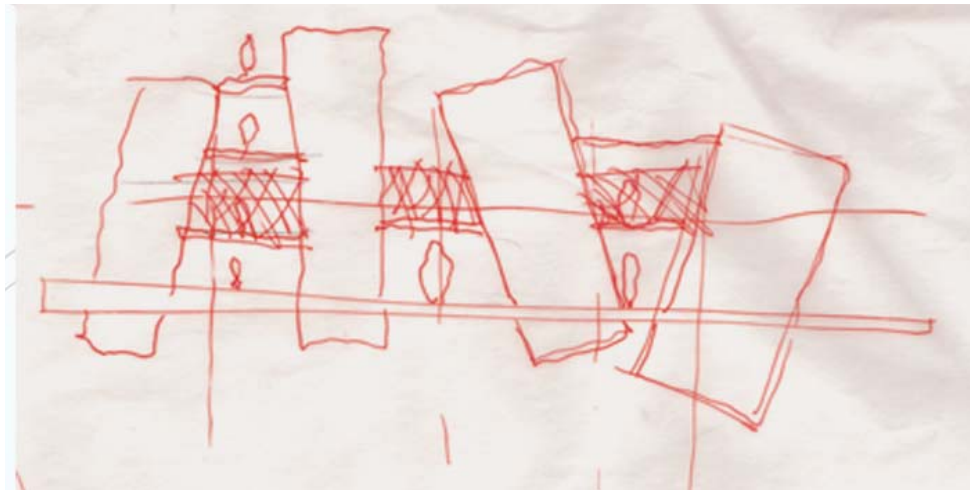
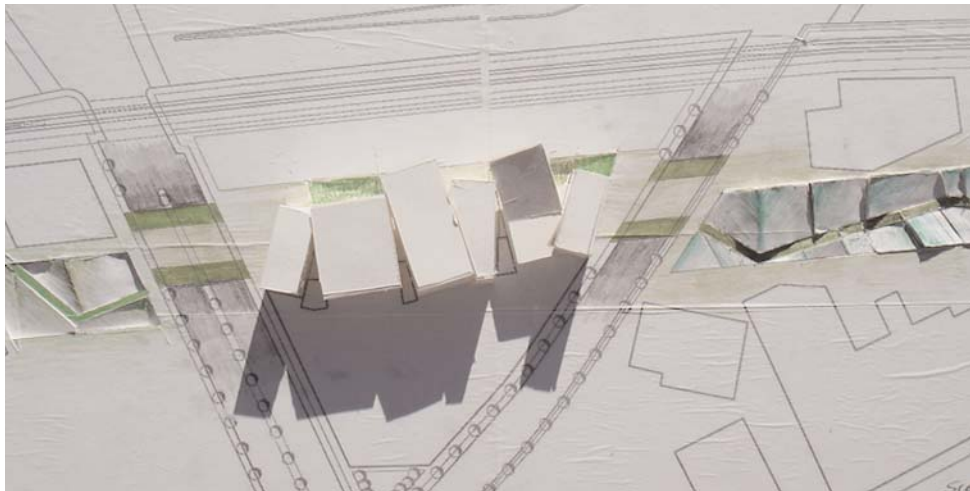


Community Arts Mediatheque

Michael Kaainoni



Bergamot Station, a gated institution with no outside connections around the site, is, in fact, one of the few places around the site for this project that promotes a public atmosphere. The Mediatheque takes advantage of the public zone that Bergamot has internalized. The project explores the experience of fragmentation of parts and the tenuous reassembly into a whole. The concept model that inspired the project is based on the idea of experiencing an earthquake. The scene is distorted and causes disorientation, a parallel with the power of art to change perception. A focal point of the scheme is established within this distortion by the gallery spaces of the Mediatheque. Circulation is vital in the design because it offers the visual collage that is created by the shifted program perspectives. Openings spill to the outside to engage outdoor spaces as well as bringing in daylight. The masterplan, embedding the Mediatheque into a neutral extrusion of office space, makes an attempt to reactivate the site to offer a new vital artery into the Bergamot Station galleries.

